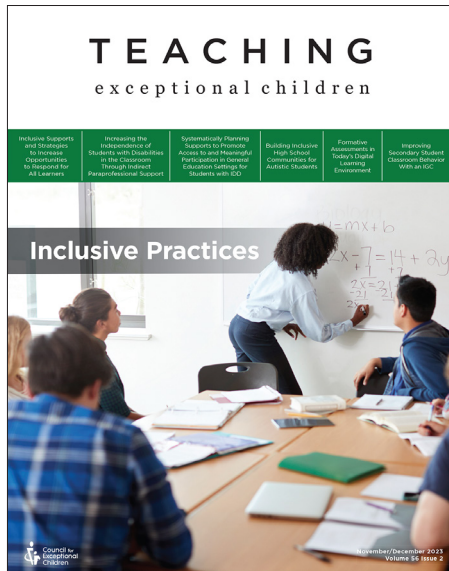


TEACHING Exceptional Journal



Published by the Council for Exceptional Children

Readership profile: *TEACHING Exceptional Children (TEC)* is read by special education teachers and administrators, paraprofessionals, early childhood special educators, college and university faculty, researchers, other professionals.

Editors: **Kyena Cornelius** University of Florida, USA
Shaqwana Freeman-Green University of North Florida, USA
Pamela Williamson University of Florida, USA

TEACHING Exceptional Children (TEC) is the flagship **research-to-practice journal** of the Council for Exceptional Children (CEC) and features practical, peer-reviewed articles and in-depth content that present methods and materials for classroom use, as well as current issues in special education teaching and learning. It also features regular columns by the CEC President, CEC Division Presidents, and other leaders in the field. The CEC Connection section of TEC also provides important news about CEC and its programs and events.

About the Council for Exceptional Children

CEC is a professional association of educators dedicated to advancing the success of children with exceptionalities. We accomplish our mission through advocacy, standards, and professional development. CEC members help serve 7.1 million children and youth with disabilities and 3 million children with gifts and talents. CEC members represent a wide range of professionals in the field of special education.

Advertising Rates and Information

2025 Issue Themes

March/April - **Collaboration**
Materials due January 13

May/June - (theme TBD)
Materials due February 7

July/August - (theme TBD)
Materials due April 8

September/October - (theme TBD)
Materials due June 16

Trim size: 8.25 inches wide x 10.875 inches high

Binding: Saddle stitched

Full page: 7.75 inches wide x 10.375 inches high (non-bleed)
8.5 inches wide x 11.125 inches high (bleed)

Half-page Vertical: 3.625 inches wide x 10.375 inches high

Half-page Horizontal: 7.75 inches wide x 5.0 inches high

Quarter-page Vertical: 3.625 inches wide x 5.0 inches high

A high-resolution press-ready PDF is required for all print ad submissions. All fonts must be embedded. Minimum required image resolution is 300 dpi for color or grayscale images and 900-1200 dpi for line art images. All color files must be in CMYK color mode. Black and white ads must be in 1-color black only.

Print advertising rates (all-color ads)

| | 1x | 3x | 6x |
|---------------------------|---------|---------|---------|
| Full Page | \$2,500 | \$2,300 | \$2,100 |
| Half Page | \$1,800 | \$1,700 | \$1,600 |
| 1/4 page | \$1,100 | \$1,000 | \$900 |
| Back Cover | \$3,100 | \$2,900 | \$2,700 |
| Inside Front Cover | \$2,900 | \$2,700 | \$2,500 |
| Inside Back Cover | \$2,800 | \$2,700 | \$2,600 |

Payment terms: Terms for invoices are net 30. Publisher reserves the right to withhold advertising from delinquent advertisers.

Digital ads are available in the Table of Contents in our TEC e-brief email from CEC.

- 48,110 subscribers (member and non-members)
- Average open rate 45%
- Published 6 times a year

LEADERBOARD

600px x 90px (.jpg, .png, or .gif accepted)
1 issue \$750, 3 issues \$2000, or all 6 issues \$4000

BOX

300px x 250 px (.jpg, .png, or .gif accepted)
1 issue \$500, 3 issues \$1250, or all 6 issues \$2500

Contact Information

Sharyn Weiss, Director of Strategic Partnerships
swiss@exceptionalchildren.org
(703) 264-9405

